

Delivering a *quality* product
in a *timely* manner
at a *competitive* price..



abcpolymer

an international plastics group

Since we produced our first pound of fiber for concrete reinforcement in 1994, we have been driven to provide the highest quality product. All of the fibers we manufacture and market must meet the highest consensus standards of ASTM and ICC.

Each package of our quality fibers is delivered with superior customer service and technical support.

ABC Polymer is an active steward and supporter of the concrete industry and proudly participates in industry organizations including FRCA, ASTM, ACI, NRMCA, ICC, TRB, as well as various state organizations.

ABC POLYMER INDUSTRIES

Denzil Schmitz

Vice President, Sales and Marketing
E: Denzil@abcfibers.com

Bobby Zellers, PE/PLS

Director, Engineering Services
E: zzzman13@hotmail.com

Leslee Quiggle

Customer Service, and Logistics Manager
E: Leslee@alabag.com

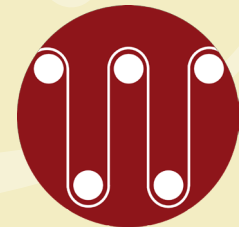
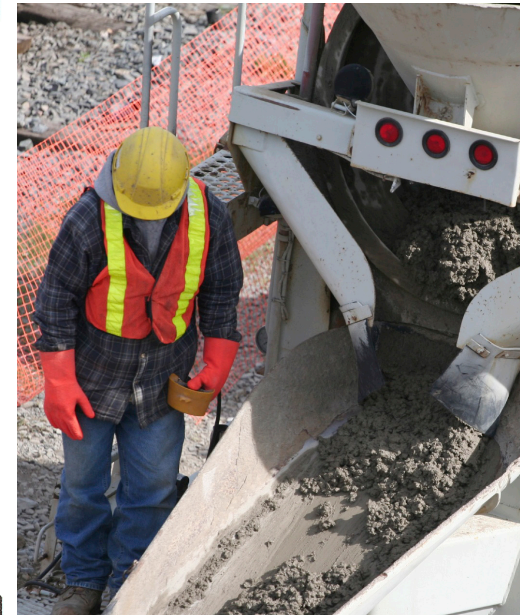
545 Elm Street

Helena AL • 35080

T: (205) 620-9889 F: (205) 620-9882

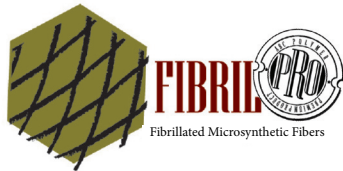
W: www.abcpolymerindustries.com

CONCRETE REINFORCING FIBERS



abcpolymer

an international plastics group



PRODUCT MENU:

Select from the Best

Microsynthetic Fibers

Polypropylene Monofilament

Mono-Tuf

Mono-Pro

Polypropylene Fibrillated

Fibril-Tuf

Fibril-Pro

Nylon Monofilament

Ny-Tuf

Ny-Pro

Macrosynthetic Fibers

Polypropylene/Polyethelene

Macro-Pro

Performance Plus DOT

Tuf-Max DOT

Steel Fibers

Steel-Pro Type V

Macrosynthetic Fiber/Microsynthetic Fiber Blends

Pro-Plus

(Performance Plus DOT/Mono-Tuf)

Pro-Plus 1000

(Performance Plus DOT/Mono-Pro)

Pro-Blend

(Macro-Pro/Mono-Tuf)

Pro-Blend 1000

(Macro-Pro/Mono-Pro)

Pro-Max

(Tuf Max DOT/Mono-Tuf)

Steel Fiber/Microsynthetic Fiber Blends

Advanced Performance

(Steel-Pro Type V/Mono-Tuf)

Advanced Performance 1000

(Steel-Pro Type V/Mono-Pro)

AR Glass

AR Glass (Alkali Resistant Glass)

Applications

Plastic Shrinkage Cracking

Plastic Shrinkage Cracking

Temperature-Shrinkage Cracking

Temperature-Shrinkage Cracking

Temperature-Shrinkage Cracking

Temperature-Shrinkage Cracking

Post-First Crack Reinforcement*

Post-First Crack Reinforcement*

Post-First Crack Reinforcement*

Post-First Crack Reinforcement*

Post-First Crack Reinforcement*

Post-First Crack Reinforcement*

Post-First Crack Reinforcement*

Post-First Crack Reinforcement*

Post-First Crack Reinforcement*

Post-First Crack*

Post-First Crack*

Temperature-Shrinkage Cracking**

Dosage

1.0 pcy

0.5 pcy

1.5 pcy

1.5 pcy

1.0 pcy

1.0 pcy

KEY

* Dosage Rate as per the Engineer/Project Specifications.

** Dosage Rate as per the application.